


Prüfbericht - Nr.: 0114074508a 001		Seite 1 von 5	
<i>Test Report No.:</i>		<i>Page 1 of 5</i>	
Auftraggeber:	Nan Ya Plastics Corporation		
<i>Client:</i>	No. 201, Peikang Rd., Sec. 2, Taipao City, Chiayi County 612, Taiwan, R.O.C.		
Gegenstand der Prüfung:	1 material(s) of plastic with coating, brown/grey		
<i>Test Item:</i>			
Bezeichnung:	南亞華麗板(貼合) NAN YA DELUXE VINYL SHEETS(LAMINATED)		
<i>Identification:</i>			
Anlieferungszustand:	apparent good	Eingangsdatum:	2018-02-14
<i>Delivery condition:</i>		<i>Date of Receipt:</i>	
Prüfart:	TÜV Rheinland Hong Kong Ltd.		
<i>Testing location:</i>			
Prüfgrundlage:	According to RoHS (recast): Restriction of the Use of Certain Hazardous Substances in Electrical and Electronic Equipment, 2011/65/EU last amended by (EU) 2015/863: Total Content of Lead, Cadmium, Mercury, Chromium VI, Polybrominated Biphenyls, Polybrominated Diphenyl Ethers; and Benzylbutyl phthalate (BBP), Dibutyl phthalate (DBP), Bis(2-ethylhexyl) phthalate (DEHP), Diisobutyl phthalate (DIBP)		
<i>Test specification:</i>			
Prüfergebnis:	According to the kind and extend of tests performed the above mentioned test item passed the test specification.		
<i>Test result:</i>			
geprüft: tested by:	kontrolliert: checked by:		
			
2018-02-26 Anne Chen /Coordinator		2018-02-26 Carl Chang /Department Manager	
Datum	Name/Stellung	Unterschrift	Datum
<i>Date</i>	<i>Name/Position</i>	<i>Signature</i>	<i>Date</i>
Sonstiges/ Other Aspects:			
Test period: 2018-02-14 – 2018-02-26			
Abkürzungen:	ok / P = entspricht Prüfgrundlage fail / F = entspricht nicht Prüfgrundlage n.a. / N = nicht anwendbar	Abbreviations:	ok / P = passed fail / F = failed n.a. / N = not applicable
Dieser Prüfbericht bezieht sich nur auf das o.g. Prüfmuster und darf ohne Genehmigung der Prüfstelle nicht auszugsweise vervielfältigt werden. Dieser Bericht berechtigt nicht zur Verwendung eines Prüfzeichens. <i>This test report relates to the a. m. test sample. Without permission of the test center this test report is not permitted to be duplicated in extracts. This test report does not entitle to carry any safety mark on this or similar products.</i>			



Test Report No. : 0114074508a 001
 Customer : Nan Ya Plastics Corporation
 Test Method : Total Cadmium, Lead, Mercury, Chromium
 - Ref. to IEC 62321-4:2013 and IEC 62321-5:2013
 Chromium (VI)
 - For Metal material - Ref. to IEC 62321-7-1:2015
 - For Plastic or Electronic material - Ref. to IEC 62321-7-2:2017
 - For Leather material - Ref. to ISO 17075:2007
 PBBs, PBDEs - Ref. to IEC 62321-6:2015

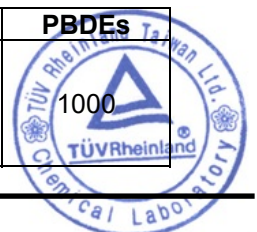
2018-02-26

Sample	LoD	南亞華麗板(貼合) NAN YA DELUXE VINYL SHEETS(LAMINATED) plastic+coating/brown/grey TCL180214-05	
Cadmium (Cd)	mg/kg	2	n.d.
Lead (Pb)	mg/kg	2	n.d.
Mercury (Hg)	mg/kg	2	n.d.
Chromium VI (Cr VI)*	mg/kg	10	n.d.
Sum of Polybrominated biphenyls (PBBs)	mg/kg	-	n.d.
Monobromobiphenyl	mg/kg	5	n.d.
Dibromobiphenyl	mg/kg	5	n.d.
Tribromobiphenyl	mg/kg	5	n.d.
Tetrabromobiphenyl	mg/kg	5	n.d.
Pentabromobiphenyl	mg/kg	5	n.d.
Hexabromobiphenyl	mg/kg	5	n.d.
Heptabromobiphenyl	mg/kg	5	n.d.
Octabromobiphenyl	mg/kg	5	n.d.
Nonabromobiphenyl	mg/kg	5	n.d.
Decabromobiphenyl	mg/kg	5	n.d.
Sum of Polybrominated diphenyl ethers (PBDEs)	mg/kg	-	n.d.
Monobromodiphenyl ether	mg/kg	5	n.d.
Dibromodiphenyl ether	mg/kg	5	n.d.
Tribromodiphenyl ether	mg/kg	5	n.d.
Tetrabromodiphenyl ether	mg/kg	5	n.d.
Pentabromodiphenyl ether	mg/kg	5	n.d.
Hexabromodiphenyl ether	mg/kg	5	n.d.
Heptabromodiphenyl ether	mg/kg	5	n.d.
Octabromodiphenyl ether	mg/kg	5	n.d.
Nonabromodiphenyl ether	mg/kg	5	n.d.
Decabromodiphenyl ether	mg/kg	5	n.d.

Notes:

- n.d. - not detected
- n.a. - not applicable
- LoD - Limit of Detection
- mg/kg is equal to ppm (parts per million)
- * Once the total Cr content in metal/ plastic or electronic sample is found to be exceeded the limit, the Cr (VI) content will be confirmed with reference to IEC 62321-7-1:2015/ IEC 62321-7-2:2017

	Cd	Cr(VI)	Pb	Hg	PBBs	PBDEs
Maximum permissible Limit acc. to 2011/65/EU (mg/kg)	100	1000	1000	1000	1000	1000



Test Report No. : 0114074508a 001
 Customer : Nan Ya Plastics Corporation
 Test Method : BBP/DBP/DEHP/DIBP - Ref. to IEC 62321-8:2017

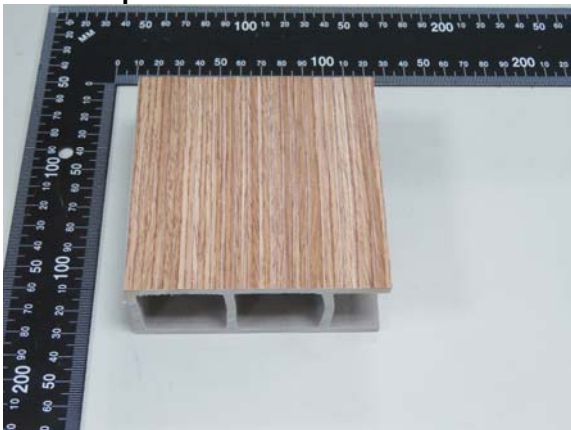
2018-02-26

Sample	LoD	南亞華麗板(貼合) NAN YA DELUXE VINYL SHEETS(LAMINATED) plastic+coating/brown/grey TCL180214-05	
Material			
Lab.-No.			
Benzylbutylphthalate (BBP)	mg/kg	50	n.d.
Dibutylphthalate (DBP)	mg/kg	50	n.d.
Diethylhexylphthalate (DEHP)	mg/kg	50	n.d.
Diisobutylphthalate (DIBP)	mg/kg	50	n.d.

Notes:

- n.d. - not detected
- n.a. - not applicable
- LoD - Limit of Detection
- mg/kg is equal to ppm (parts per million)

	BBP	DBP	DEHP	DIBP
Maximum permissible Limit acc. to (EU) 2015/863 (mg/kg)	1000	1000	1000	1000

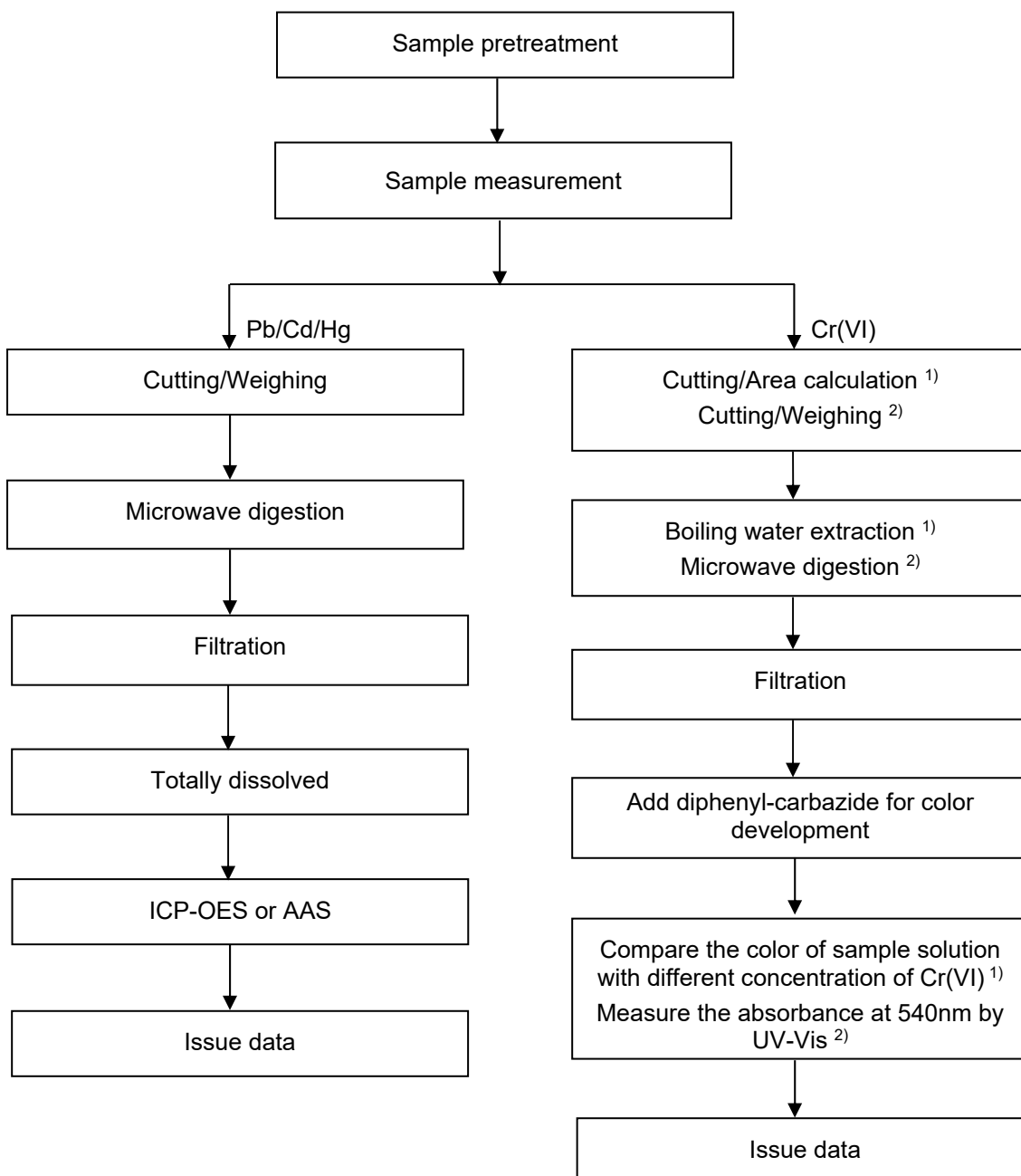
Test Sample


Test Report No. : 0114074508a 001
Customer : Nan Ya Plastics Corporation

2018-02-26

Testing procedure:

RoHS (Pb, Cd, Hg, Cr(VI))



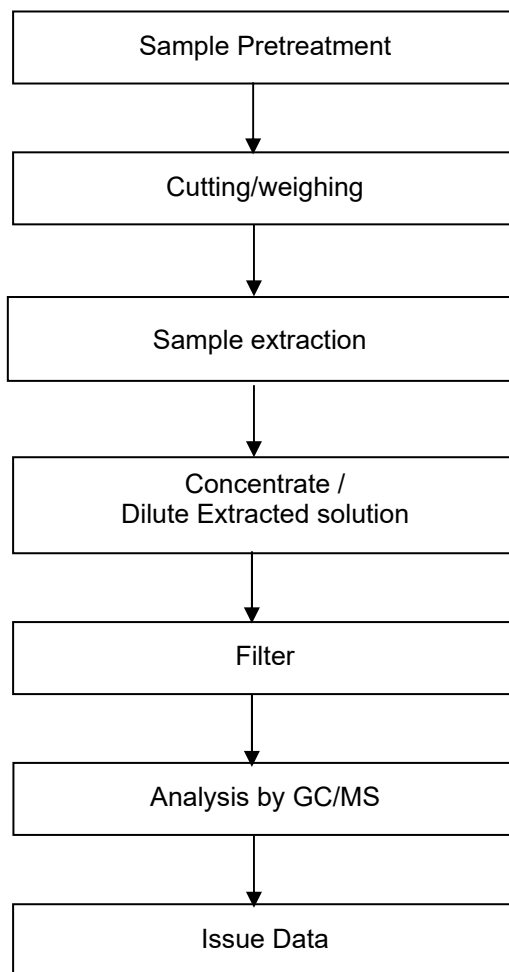
Notes: ¹⁾ For metallic material
²⁾ For non-metallic material

Test Report No. : 0114074508a 001
Customer : Nan Ya Plastics Corporation

2018-02-26

Testing procedure:

RoHS (PBBs/PBDEs, DEHP/DBP/BBP/DIBP)



--- End of Test-Report ---

