

| | | | |
|-------------------------------------------------------------------------------------------------------------------------------------------------------------------------------------------------------------------------------------------------------------------------------------------------------------------------------------------------------------------------------------------------------------------------------------------------------------------------------------|----------------------------------------------------------------------------------------------------------------------------------------------------------------------------------------------------------------------------------------------------------------------------------------------------------------------------------------------------------------------------------------------------------------|--------------------------------------------------------------------------------------|-------------------------------------------------------------------|
| Prüfbericht - Nr.: 0114074347a 001 | | Seite 1 von 5 | |
| <i>Test Report No.:</i> | | <i>Page 1 of 5</i> | |
| Auftraggeber: | Nan Ya Plastics Corporation | | |
| <i>Client:</i> | No. 201, Peikang Rd., Sec. 2, Taipao City, Chiayi County 612, Taiwan, R.O.C. | | |
| Gegenstand der Prüfung: | 1 material(s) of plastic, grey | | |
| <i>Test Item:</i> | | | |
| Bezeichnung: | 塑鋼板樁(VINYL SHEET PILE) | | |
| <i>Identification:</i> | | | |
| Anlieferungszustand: | apparent good | Eingangsdatum: | 2018-02-08 |
| <i>Delivery condition:</i> | | <i>Date of Receipt:</i> | |
| Prüfart: | TÜV Rheinland Hong Kong Ltd. | | |
| <i>Testing location:</i> | | | |
| Prüfgrundlage: | According to RoHS (recast): Restriction of the Use of Certain Hazardous Substances in Electrical and Electronic Equipment, 2011/65/EU last amended by (EU) 2015/863: Total Content of Lead, Cadmium, Mercury, Chromium VI, Polybrominated Biphenyls, Polybrominated Diphenyl Ethers; and Benzylbutyl phthalate (BBP), Dibutyl phthalate (DBP), Bis(2-ethylhexyl) phthalate (DEHP), Diisobutyl phthalate (DIBP) | | |
| <i>Test specification:</i> | | | |
| Prüfergebnis: | According to the kind and extend of tests performed the above mentioned test item passed the test specification. | | |
| <i>Test result:</i> | | | |
| geprüft: tested by: | kontrolliert: checked by: | | |
|  | |  | |
| 2018-02-14 Anne Chen /Coordinator | | 2018-02-14 Carl Chang /Department Manager | |
| Datum | Name/Stellung | Unterschrift | Datum |
| <i>Date</i> | <i>Name/Position</i> | <i>Signature</i> | <i>Date</i> |
| Sonstiges/ Other Aspects: | | | |
| Test period: 2018-02-08 – 2018-02-14 | | | |
| Abkürzungen: | ok / P = entspricht Prüfgrundlage fail / F = entspricht nicht Prüfgrundlage n.a. / N = nicht anwendbar | Abbreviations: | ok / P = passed fail / F = failed n.a. / N = not applicable |
| Dieser Prüfbericht bezieht sich nur auf das o.g. Prüfmuster und darf ohne Genehmigung der Prüfstelle nicht auszugsweise vervielfältigt werden. Dieser Bericht berechtigt nicht zur Verwendung eines Prüfzeichens. <i>This test report relates to the a. m. test sample. Without permission of the test center this test report is not permitted to be duplicated in extracts. This test report does not entitle to carry any safety mark on this or similar products.</i> | | | |



Test Report No. : 0114074347a 001 2018-02-14
 Customer : Nan Ya Plastics Corporation
 Test Method : Total Cadmium, Lead, Mercury, Chromium
 - Ref. to IEC 62321-4:2013 and IEC 62321-5:2013
 Chromium (VI)
 - For Metal material - Ref. to IEC 62321-7-1:2015
 - For Plastic or Electronic material - Ref. to IEC 62321-7-2:2017
 - For Leather material - Ref. to ISO 17075:2007
 PBBs, PBDEs - Ref. to IEC 62321-6:2015

| Sample Material Lab.-No. | LoD | 塑鋼板樁(VINYL SHEET PILE) plastic/grey TCL180208-05 |
|------------------------------------------------------------|-----|--------------------------------------------------------|
| Cadmium (Cd) mg/kg | 2 | n.d. |
| Lead (Pb) mg/kg | 2 | n.d. |
| Mercury (Hg) mg/kg | 2 | n.d. |
| Chromium VI (Cr VI)* mg/kg | 10 | n.d. |
| Sum of Polybrominated biphenyls (PBBs) mg/kg | - | n.d. |
| Monobromobiphenyl mg/kg | 5 | n.d. |
| Dibromobiphenyl mg/kg | 5 | n.d. |
| Tribromobiphenyl mg/kg | 5 | n.d. |
| Tetrabromobiphenyl mg/kg | 5 | n.d. |
| Pentabromobiphenyl mg/kg | 5 | n.d. |
| Hexabromobiphenyl mg/kg | 5 | n.d. |
| Heptabromobiphenyl mg/kg | 5 | n.d. |
| Octabromobiphenyl mg/kg | 5 | n.d. |
| Nonabromobiphenyl mg/kg | 5 | n.d. |
| Decabromobiphenyl mg/kg | 5 | n.d. |
| Sum of Polybrominated diphenyl ethers (PBDEs) mg/kg | - | n.d. |
| Monobromodiphenyl ether mg/kg | 5 | n.d. |
| Dibromodiphenyl ether mg/kg | 5 | n.d. |
| Tribromodiphenyl ether mg/kg | 5 | n.d. |
| Tetrabromodiphenyl ether mg/kg | 5 | n.d. |
| Pentabromodiphenyl ether mg/kg | 5 | n.d. |
| Hexabromodiphenyl ether mg/kg | 5 | n.d. |
| Heptabromodiphenyl ether mg/kg | 5 | n.d. |
| Octabromodiphenyl ether mg/kg | 5 | n.d. |
| Nonabromodiphenyl ether mg/kg | 5 | n.d. |
| Decabromodiphenyl ether mg/kg | 5 | n.d. |

Notes:

- n.d. - not detected
- n.a. - not applicable
- LoD - Limit of Detection
- mg/kg is equal to ppm (parts per million)
- * Once the total Cr content in metal/ plastic or electronic sample is found to be exceeded the limit, the Cr (VI) content will be confirmed with reference to IEC 62321-7-1:2015/ IEC 62321-7-2:2017

| | Cd | Cr(VI) | Pb | Hg | PBBs | PBDEs |
|-------------------------------------------------------------|-----|--------|------|------|------|-------|
| Maximum permissible Limit acc. to 2011/65/EU (mg/kg) | 100 | 1000 | 1000 | 1000 | 1000 | 1000 |



Produkte
Products

Test Report No. : 0114074347a 001
 Customer : Nan Ya Plastics Corporation
 Test Method : BBP/DBP/DEHP/DIBP - Ref. to IEC 62321-8:2017

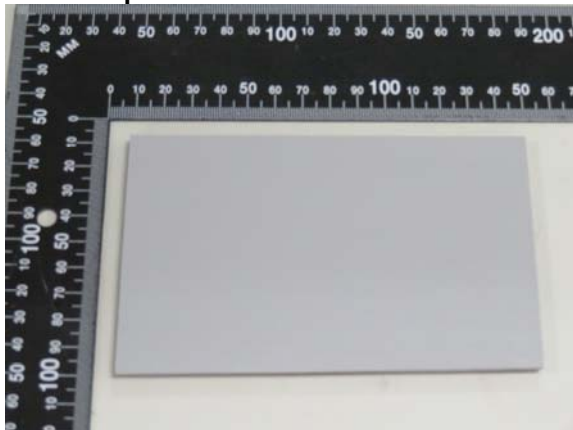
2018-02-14

| | | | |
|------------------------------|-------|-----|------------------------|
| Sample | | LoD | 塑鋼板樁(VINYL SHEET PILE) |
| Material | | | plastic/grey |
| Lab.-No. | | | TCL180208-05 |
| Benzylbutylphthalate (BBP) | mg/kg | 50 | n.d. |
| Dibutylphthalate (DBP) | mg/kg | 50 | n.d. |
| Diethylhexylphthalate (DEHP) | mg/kg | 50 | n.d. |
| Diisobutylphthalate (DIBP) | mg/kg | 50 | n.d. |

Notes:

- n.d. - not detected
- n.a. - not applicable
- LoD - Limit of Detection
- mg/kg is equal to ppm (parts per million)

| | BBP | DBP | DEHP | DIBP |
|----------------------------------------------------------------|------|------|------|------|
| Maximum permissible Limit acc. to (EU) 2015/863 (mg/kg) | 1000 | 1000 | 1000 | 1000 |

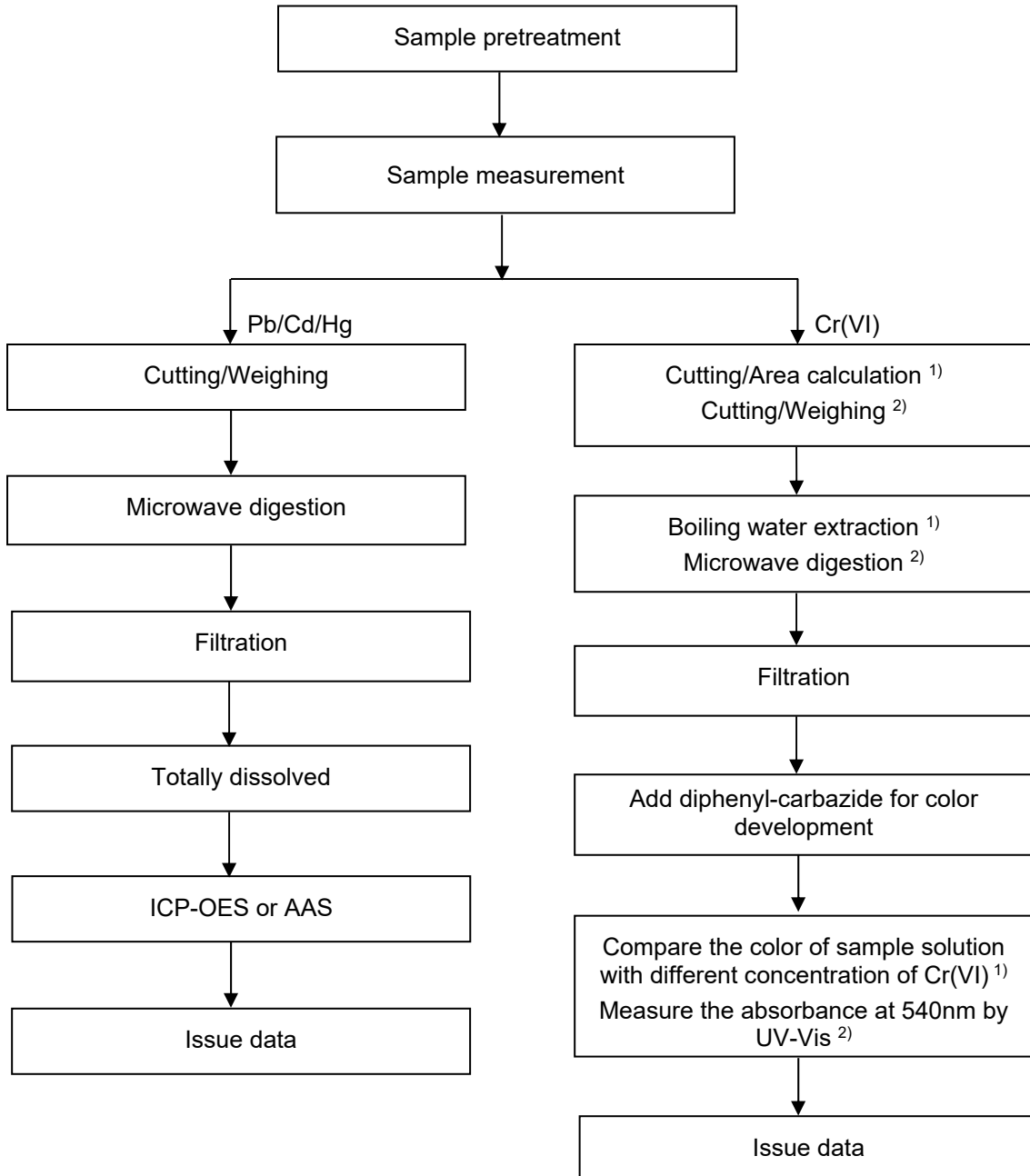
Test Sample


Test Report No. : 0114074347a 001
 Customer : Nan Ya Plastics Corporation

2018-02-14

Testing procedure:

RoHS (Pb, Cd, Hg, Cr(VI))



Notes: ¹⁾ For metallic material
²⁾ For non-metallic material

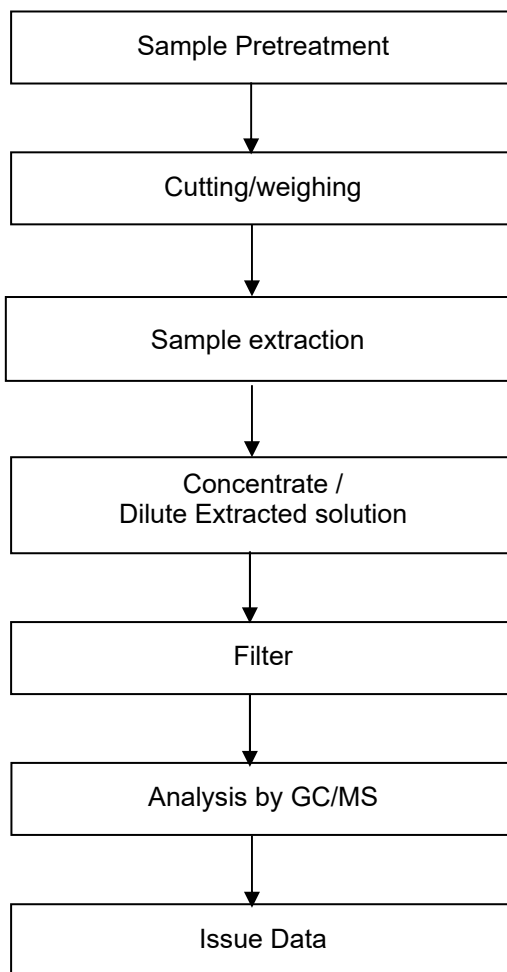


Test Report No. : 0114074347a 001
Customer : Nan Ya Plastics Corporation

2018-02-14

Testing procedure:

RoHS (PBBs/PBDEs, DEHP/DBP/BBP/DIBP)



--- End of Test-Report ---

